

Papercraft Bird House

You will need:-

A take out box

Scissors

Ruler

Pencil

Two or three pieces of good quality patterned card or paper of your choice if you're making your box from scratch or want to cover it. *You need two pieces of A4 paper or 1 12x12 piece for the body of the house and approx A5 size piece of paper or a quarter of a piece of 12x12 for the roof.*

Double sided sticky tape or adhesive of your choice

Ball tool for scoring (if you don't have one you can use an old ball pen which has run out of ink)

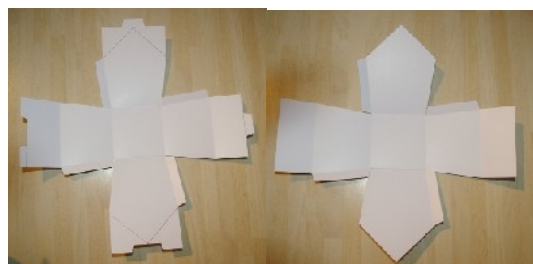
Edge punch (I used a Fiskars punch) or fancy scissors

NB. You can download a FREE take out box template from www.packagetech.com. They also have photographs and instructions for assembly. Don't forget that if the template is too small for your requirement, you can take it down to your local reprographics centre to be enlarged to your required size on a photocopier.



What to do:-

Cut out whichever template you are going to use and lay it out flat. You need to end up with two opposite sides cut straight to attach the roof to and two opposite sides pointed to form the apex of the roof.



Now assemble the box so that you have your basic shape.

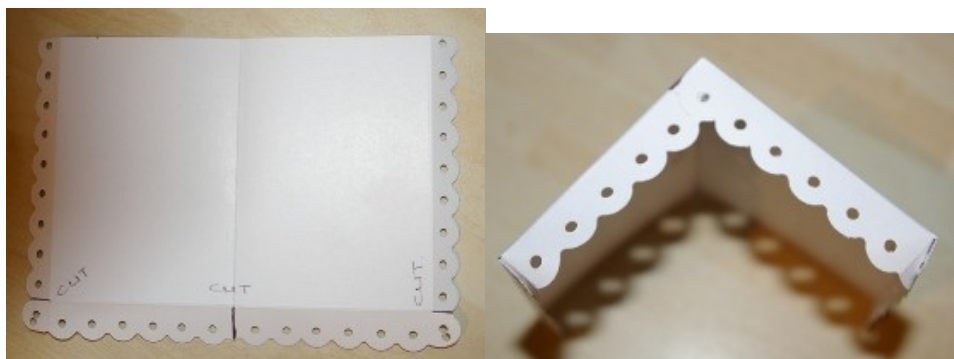
Cut a straight piece of card so that it overhangs on three sides by 1.5cm.

Next, punch or cut with fancy scissors around three sides



Measure 1cm (10mm) in from the edge of the roof on the three sides with the fancy edging and score a straight line along each edge.

Now cut to the next line along the three lines shown and fold the scallops down to form the front of the roof. Glue or tape in place. You'll see that I've punched two holes in the bottom corner pieces. You need to fold and stick these pieces underneath the side scallops so they are hidden.



Next, you need to decide whether you want to make your bird house as a gift box with a hinged lid or just as a decoration. If you just want a decoration then you can put double sided sticky tape or glue on the two flat sides and stick down your roof. If you want to be able to raise the roof like a lid you need to tape just one of the flat sides.

Lay the roof on the top of the house and stick down securely.



Cut a narrow strip of card about 5cm wide and the length of the apex of the roof and scallop the edges as you have done with the sides. Fold this piece in half and stick it to the apex of the roof. If you want to hang your house by a ribbon, this would be the time to cut a narrow slot big enough to thread your ribbon through along the fold of this piece and attach your ribbon underneath with tape or adhesive to hold the ends neatly out of sight. Do this BEFORE you stick the strip to the top of the roof so it hides the ends of your ribbon and holds it securely.



The house is now ready to decorate however you wish.

Here is a Christmas version of the birdhouse...



Created by Lauren Hatwell

<http://bluebertie.blogspot.com>

© www.easycraftprojects.net 2009