

Make this...

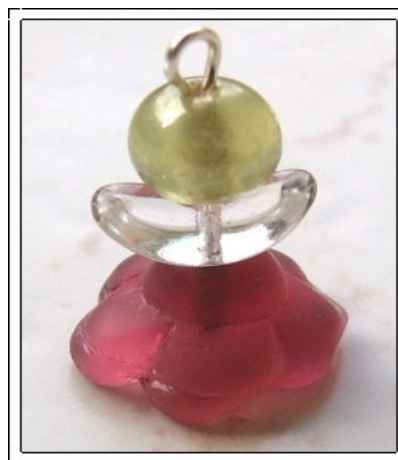
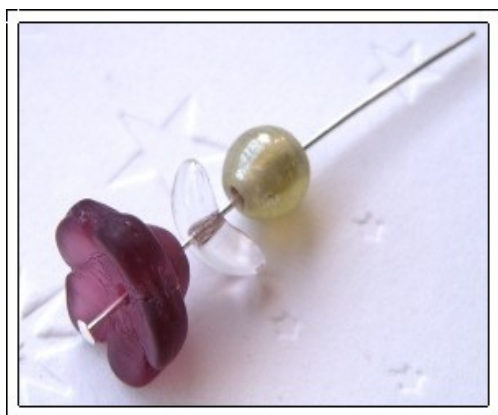
Angel Pluster Christmas Decoration

You will need:
4 x flower beads
4 x crystal angel wings
headpins
jump rings
star charms
assorted crystal, red and green beads
10cm chain
ribbon



Instructions:

Make the angel charms by putting a flower bead, angel wing and small bead on a headpin. Turn a loop in the headpin (cutting off excess wire).



With a jump ring, attach an angel charm to the end of the chain. Add the other angel charms to the chain & add the stars using jump rings.



Put the beads on head pins, turn a loop in the wire but don't fully close the loop.

Slip the loop through a loop in the chain and then close it.



Add a jump ring to the other end of the chain.



And add a ribbon so you can tie the decoration to your Christmas tree.

Created by Karen Rickard
<http://justkjewellery.blogspot.com>
© www.easycraftprojects.net 2008